

# Care Home Catalogue

Your Personal Care Home  
Signage Expert



4 FLATS 413 - 460  
GUEST ROOM  
MINI WINTER GARDEN  
3 FLATS 301 - 362  
GUEST ROOM  
2 FLATS 201 - 272  
1 FLATS 101 - 172  
GREENHOUSE & HOBBIES  
G FLATS 001 - 019  
FLATS 063 - 072  
VILLAGE CENT



Stocksigns

# Welcome

## About Us

We recognise that care homes whether purpose built, new build, conversions or existing buildings all have their own unique problems and requirements. From construction site hoardings to marketing suite signage, Stocksigns will put together your message from the build phase through to the finished development. We deal with all aspects of internal and external signage ready for your clients to move in. Parking control, line marking, speed limit reminders along with external branding to complete your new build.

We can ensure your existing buildings meet legislation and remains compliant. Our signage range includes all you would think of and more beyond. We offer Meet the Team boards, Improvement and Activity boards and a range of signs and products to help aid people living with dementia.



### Survey

Our site survey team offer free advice and reports



### Design

We can design a range of products from simple to bespoke



### Manufacture

All our products are manufactured in the UK



### Installation

We have a dedicated team of fitters and install experts



## Let's Talk

**Call:** 01737 774077

**Email:** [sales@stocksigns.co.uk](mailto:sales@stocksigns.co.uk)

**Visit:** [www.stocksigns.co.uk](http://www.stocksigns.co.uk)

New Build **1 - 4**

Marketing **5 - 6**

External Signage **7 - 9**

Interior Design **10 - 11**

Internal Communication **12 - 13**

Wayfinding **14 - 16**

Door Signage **17 - 19**

Health & Safety **20 - 22**

Index **23**

# New Build

---

Signage starts at the very beginning of every build. Hoarding panels are essential for safety, but they also play a key role in advertising the build. Safety signs are essential to every type of site to allow construction to commence. In the following pages you will see the core range of site safety signs and examples of hoarding panels created by Stocksigns Ltd.

Site Safety Packs

2-3

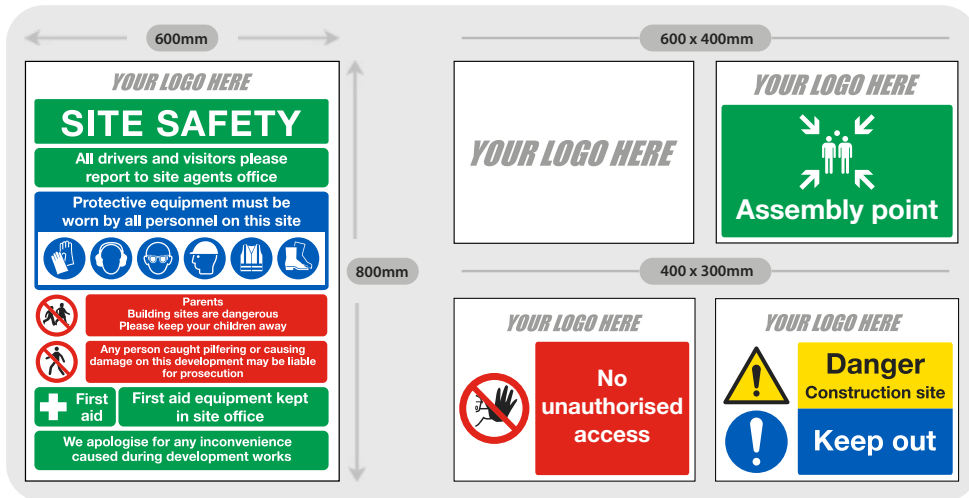
Hoarding Panels & Temporary Correx

4

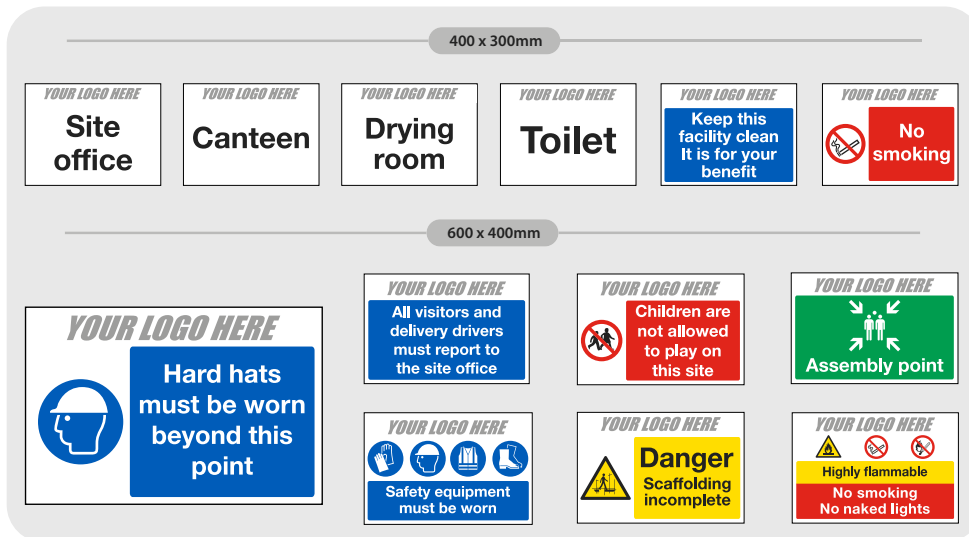


# Site Safety Packs

## Starter Pack



## Health & Safety Pack

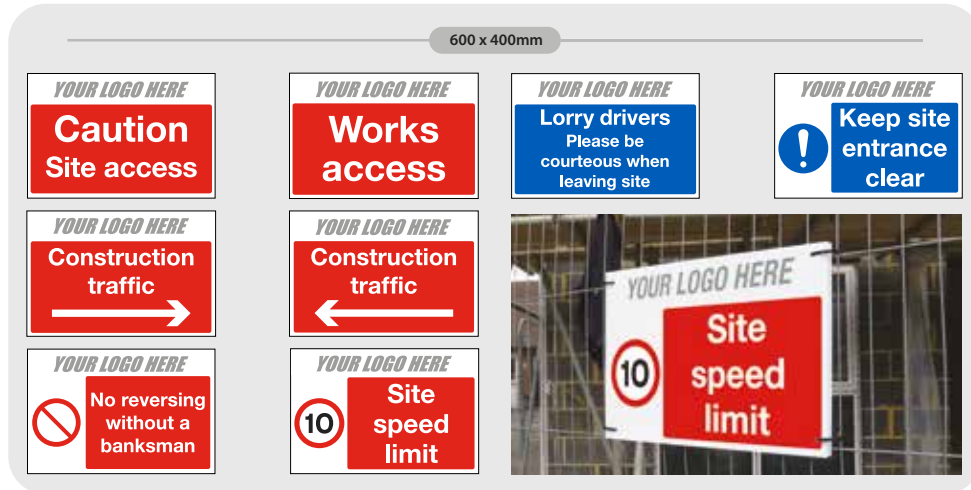


## Main Signs Pack

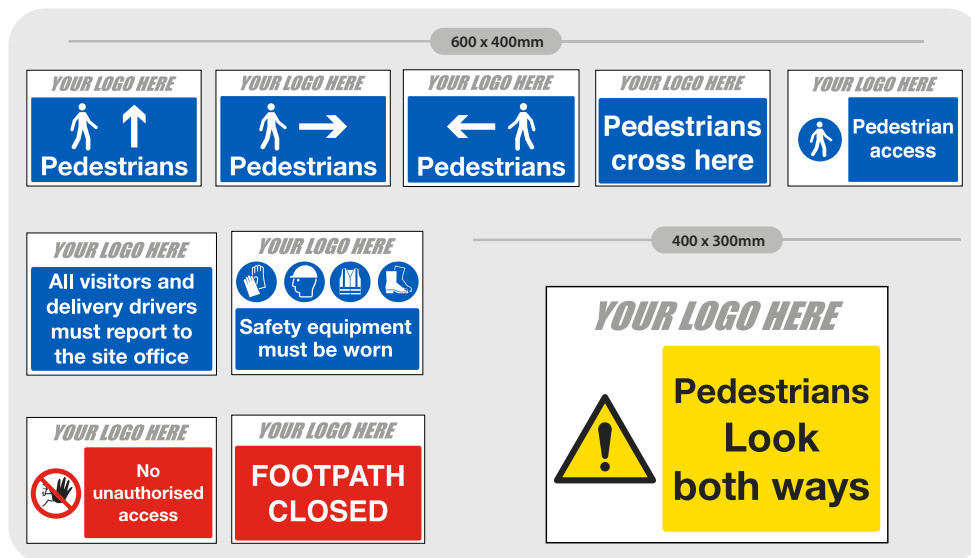


# Site Safety Packs

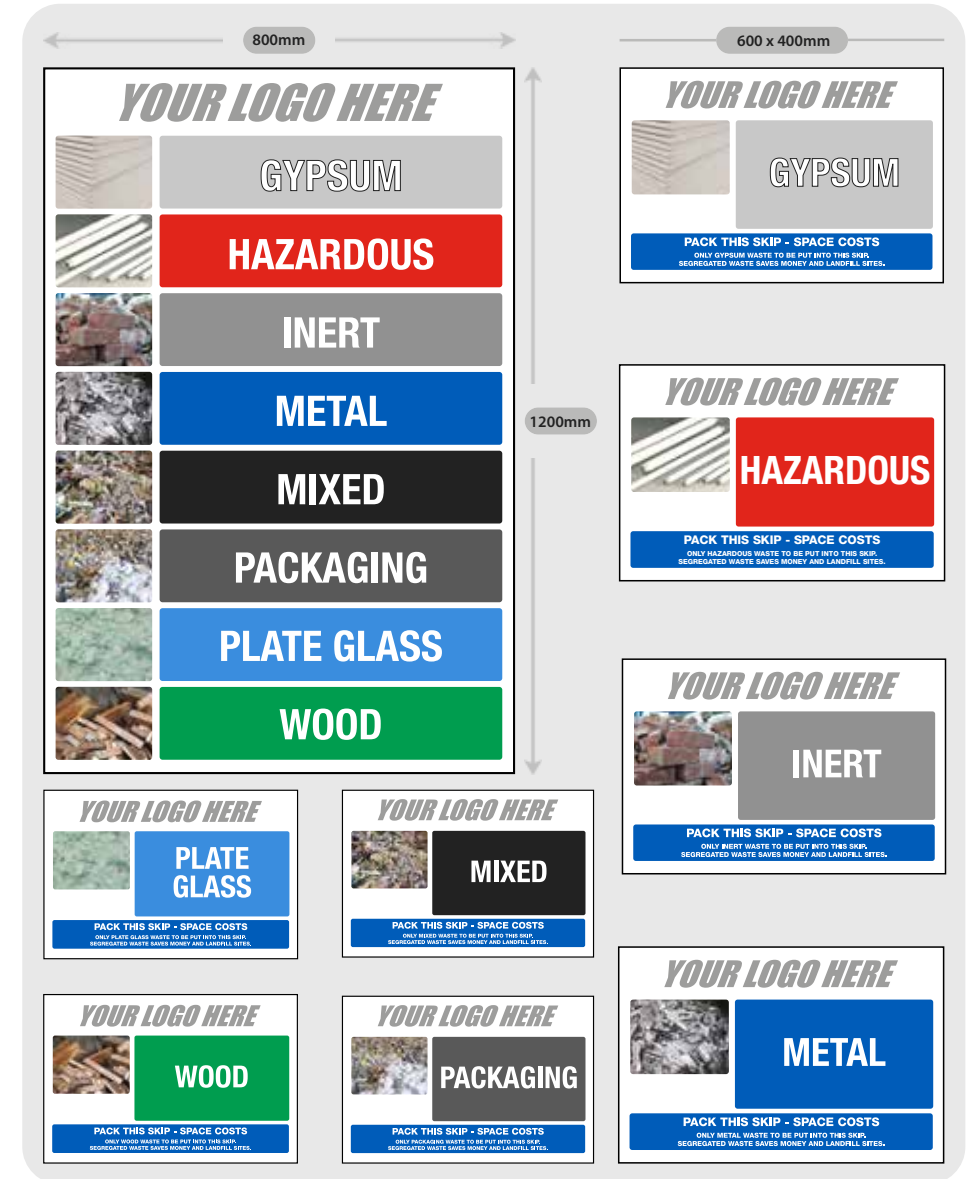
## Traffic Management Pack



## Pedestrian Route Pack



## Waste Management Pack



# Hoarding Panels & Temporary Correx

## Hoarding Panels



Produced on hoarding grade aluminium composite with anti-graffiti protection as standard, we offer a range of high quality panels, with exceptional print quality.



Manufactured on-site at our Redhill factory, using our state of the art UV digital printer, the panels can incorporate your brand, imagery and photography – creating a striking display to promote your forthcoming development.

## Temporary Correx



The majority of our construction site safety signs are manufactured in a choice of lightweight 4mm or 10mm thick corrugated PVC material, which is ideal for temporary signs.

All of our Correx signs can be fixed by screws, punched for cable ties, nailed or even held in place with glue or VHB tape, so they are suitable for a huge range of construction environments.

# Marketing

---

A professionally produced suite of signs create that all important first impression to your potential customers and the wider public. Stocksigns can provide a full range of custom-made signs, posts and fittings in any style to suit your brand and premises.

Banners, Ladder Signage, Pavement & V Boards

6



5

# Marketing

## Banners

Banners are an ideal solution for temporary messaging or advertising. Available in a variety of materials and sizing, the banners are eye-catching and easy to install signs, further more your banner can be stored and re-used too.



## Pavement Boards



These signs are popular in many industries for their benefits of being eye-catching and easy relocated. These signs can be easily changed whilst using the same base and stand, offering flexibility in the usage and messaging.

## Ladder Signage



These wayfinding signs are constructed in a way where each sign can be slid out the top of the sign, this enables re-ordering or updating of the sign without re-installing a whole new sign in the eventuality there are layout or name changes to the property.

## V Boards



V-Boards are mostly used to advertise building 'To Let' or 'For Sale', making them the ideal marketing tool to advertise available rooms or buildings in your care home.

# External Signage

---

With a team of trained and experience sign fitters and our state of the art manufacturing site in Surrey, we can create a whole suite of signs for you. Whether you are in need of external entrance signs, parking signs, external way-finding or window vinyl manifestations, our team will manufacture and install them for you.

Fascia & Main Outdoor Signage **8**

---

Car Park, Legislation, CCTV & Smoking **9**

---



# Fascia & Main Outdoor Signage

## Fascia Signage



These signs are the key to making a good first impression of your establishment to your residents and visitors. With so much opportunity for creativity, the signage can be created in many different materials, colours, shapes and sizes to suit your building.



Do you need some vinyl designs on your entrance doors?

Head over to Page 11

## Dementia Garden

Making every day life as easy as possible for all Dementia sufferers can be done creatively. Dementia Gardens are popular all over the UK's Care Home industry because of their strong, positive affects and their ability to bring joy to their residents using the garden.



Signage can include mimics of road signage and photographic signs, as seen above, to help dementia sufferers navigate the garden safely and stress-free.



# Car Park & Legislation

## Car Park



Car Parks can pose many dangers when not properly organised. With vehicles and pedestrians sharing the space, it is vital to ensure all users are navigating the area safely. As well as safety, the car park is often the first interaction with your Care Home, so it is best to ensure this area is well maintained and easy to use.

Signage can be used to advise of speed limits, directions or parking instructions.

## Legislation



All your buildings will require safety signs by law. The Fire Exit route must be clearly shown, as well as any risks highlighted or CCTV usage communicated. Working out which signs are needed can be tricky, so our experienced site surveyor can conduct surveys to ensure all the essential signs are in place.



# Interior Design

---

The creative side of signage; Interior Design. This ranges from the wayfinding signs and branding, to window manifestations and wall vinyl. Stocksigns can work with you to design dementia friendly signage as well as create stunning designer signs.

Window Vinyls, Corporate Branding, Wall & Doors

11



# Window Vinyls, Corporate Branding, Walls & Doors

## Window Vinyls



Did you know it is the law to have highlighting on glass doors and windows? This is to avoid injury caused by confusion due to transparency. However, the vinyl applied to the windows or doors can be creative, with branded designs or pleasing patterns.

## Corporate Branding

Make sure you have clear and consistent branding across your building with our high-quality, bespoke corporate branding signs. We can offer these in a wide range of custom shapes, sizes and materials.



## Walls & Doors



Wall signage can be imperative for making sure staff, visitors and residents can navigate your building safely and easily. These signs can be used to advise of what is on each floor of the building, or for wayfinding to different sections of a particular floor.



Door signage can be used to label any offices, facilities such as toilets or kitchens. These can all be manufactured with bespoke colouring and branding.

# Internal Communication

---

Whether it's a simple notice board, an acknowledgement of an achievement, a dignity door hanger or any type of internal communication, Stocksigns has you covered. Our range of pin boards, frames and hangers will ensure that all residents are kept up-to-date with the latest news and upcoming events.



# Internal Communication

## You Said, We Did Boards



These boards are a great way to make residents aware that their feedback and ideas are being heard. They're also excellent for tracking the progress and quality of a home.

## Activity/Orientation Boards

It's great for care homes to organise time for residents to enjoy themselves and relax. Our activity and orientation boards provide a way to keep residents up to date with any events coming up.



## Meet The Team Boards



These are a brilliant way to create an open and friendly atmosphere around your premises, allowing both guests and residents to get to know staff onsite and feel comfortable around you building.

## Dignity Door Hangers



It's incredibly important to allow residents as much privacy as they need. Dignity door hangers provide an excellent way to politely notify staff no to disturb a resident, or to come back later.

## Lockable Pin Boards & Frames

Want to enforce safety around you premises? Or provide an update to those onsite about an upcoming event? Stocksigns' range of boards and frames will do just the trick. Being easily interchangeable, you can update messages within minutes.



# Wayfinding

---

Wayfinding sign systems aim to make navigation around unfamiliar grounds and buildings as simple as possible. These signs are often the first point of contact a customer has with your company. As well as functionality of the sign, design and aesthetics should be considered.

Internal 15

---

External 16

---



# Internal

## Floor Markers



Use these simple yet effective signs to signify to anyone within the premises which floor they are on, and the contents of a floor.

## Projecting Signage



If you need an eye-catching way to inform people of lift & stair locations, bathroom facilities or other important areas of the building, projecting signs are bolder and easier to read when looking down a hallway than a conventional wall-mounted sign.

## Lift & Stairwell Signage



Create clear and guided routes to the nearest staircase or lift with our bespoke signage. Use logos and custom fonts to really tie the signs in with your branding, and keep a consistent look throughout the premises.



## Outdoor Wayfinding



Navigating around a site can prove difficult, especially a large site with multiple buildings. Stocksigns' outdoor wayfinding signage can provide a great way to ensure all areas of your premises are clearly marked and residents know how to access the correct buildings.



## Case Study

**Client:** Care UK

**Contact:** Janine Leatham

**Site:** Worcester

**Account Manager:** Anjella Bolton-Smith

**Project Aim:** To improve visibility and presence of the care home.



We had a telephone conference with Care UK's Marketing Manager and followed up with a site visit to meet key personnel at the Care Home.

Our recommendations included getting excess foliage cut down see first 2 pictures with the help of Google earth and our visit we suggested external letters to the left hand side elevation so it would enable all visitors to the major hospital next door of the Care Home's existence.

Stocksigns were chosen due to their experience in the Care Sector ability to provide practical and cost effective solutions.

James Wright Customer Relations Manager/Residential Services Care UK said "The letters add some real presence to the building, as a result of this we have also now been requested to replace old tatty flags and improve the signage for vehicular access to the Care Home" **"I cannot recommend Stocksigns enough, the service has been fantastic, from installation to any snags or issues we have had since. The customer service is great and the installers were very helpful and friendly, keep up the good work!"** – James Wright, Care UK

# Door Signage

---

Door signs and nameplates are often overlooked in a new build or company revamp, often considered a small detail that is left to the last minute to sort out. This is a reminder of how careful planning early on in the project can help you avoid costly mistakes.

Bathroom & Living Facilities

18

Door Numbers, Name Plates & Sliders

19



# Bathroom & Living Facilities

## Bathroom Facilities



Simple yet effective bespoke signage to indicate a shower, bathroom or toilet.

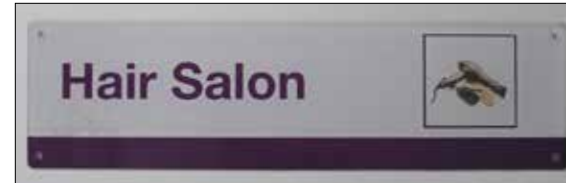


## Living Facilities



Clearly mark the living spaces throughout your premises with our living facilities signage.

## Activities



No matter how many or what type of activities are onsite, we can create a sign to suit your every need.



## Offices / Staff Areas



It's very important to clearly label the area of your premises that should only be accessed by staff. This ensure that residents and visitors are kept safe.



# Door Numbers, Name Plates & Sliders

## Door Numbers & Name Plates

Use clear and consistent signage to signify each room number and/or the occupant of each room to residents and personnel on site.



## Sliders



Quickly and easily notify passers-by if a room is in use or vacant with Stocksigns' range of door sliders.



## Door Signage For Dementia



Research suggests that dementia door signs around the home can help greatly reduce confusion, and help patients with daily life. Our signs can be designed in a familiar style for residents, to make them feel more at home and comfortable. Why not go one step further and use wall vinyl on the corridor walls to create a more comfortable experience by the use of window and wall graphics which would be familiar to your residents.

# Health & Safety

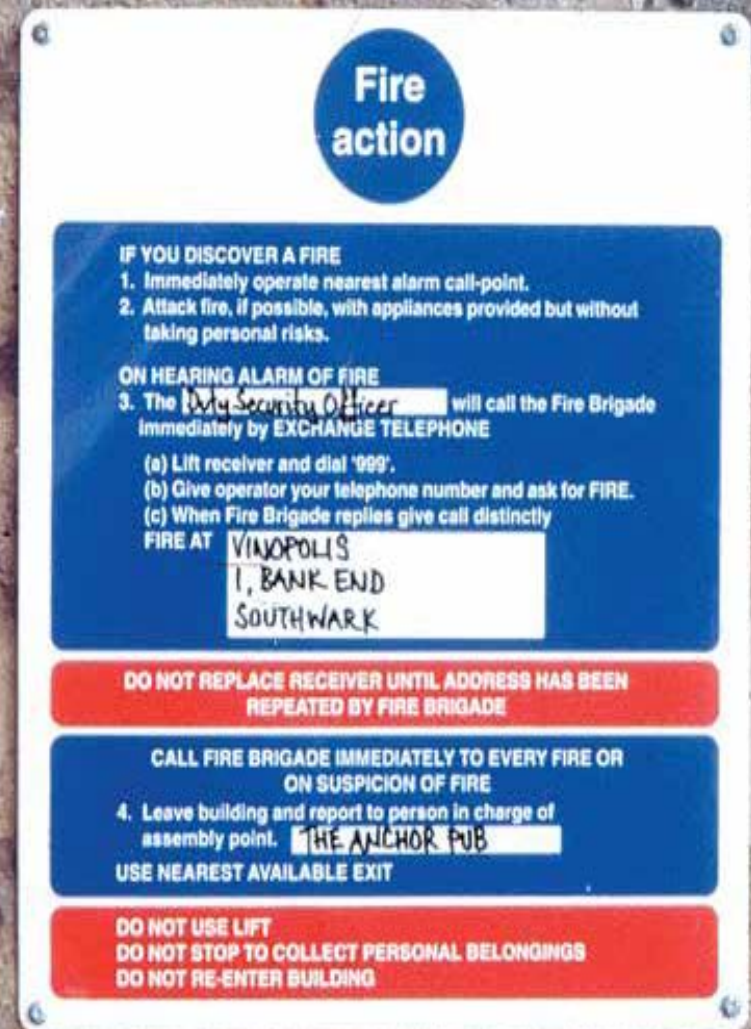
In a world governed by Health & Safety regulations it has never been so important to ensure you have the correct signage. Signage is the main way of communicating Health & Safety information to make sure that people understand the risks around them.

Fire Safety & Hazard Signage

21

Dementia Signage

22



20

# Fire Safety & Hazard Signage

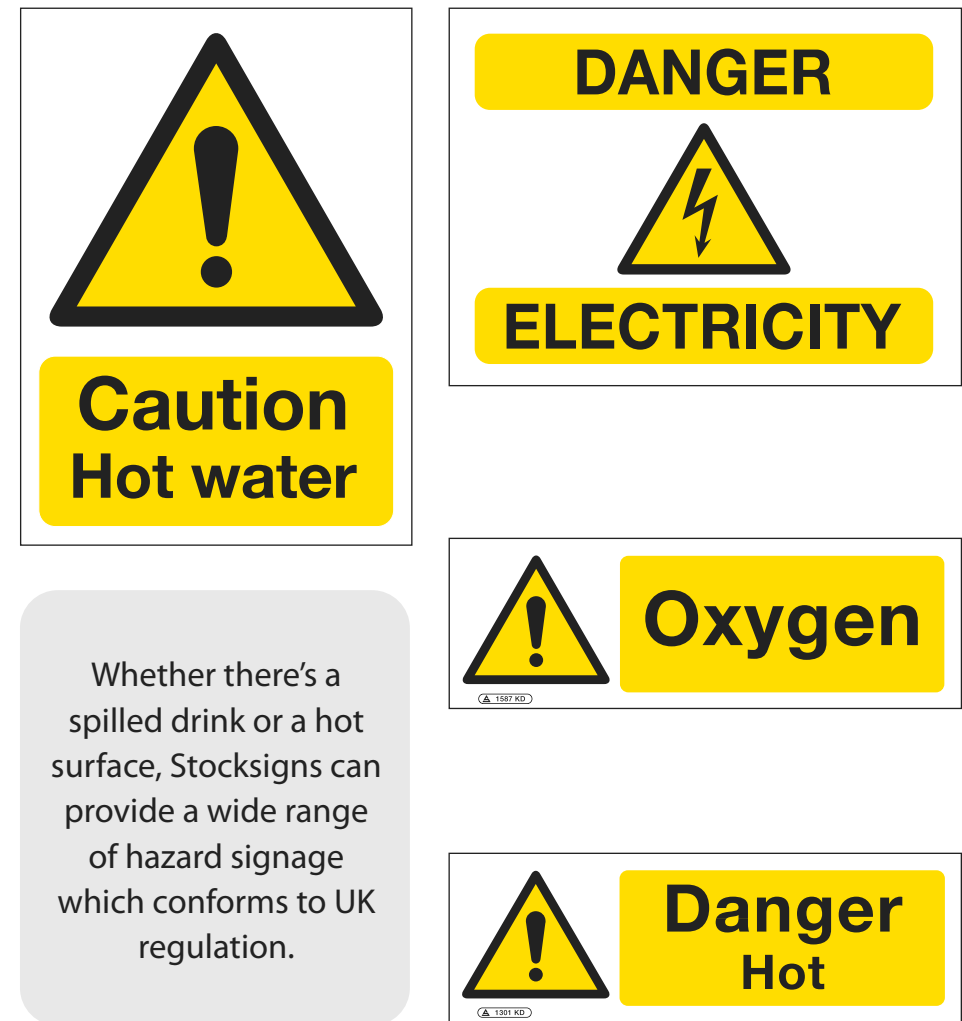
## Fire Safety



Clear and concise fire safety signage to ensure everyone onsite is aware of procedures and exits in the event of a fire. Stocksigns offer these signs in a wide range of materials and sizes to suit the needs of everyone onsite.

## Hazard Signage

Use these bright, eye-catching signs to warn residents of any hazards around your premises.



Whether there's a spilled drink or a hot surface, Stocksigns can provide a wide range of hazard signage which conforms to UK regulation.

# Dementia Signage

## Dementia Signage

Disorientation and bewilderment are a common experience for people with dementia. Through the use of clear and pictorial signs, dementia sufferers will find it easier to navigate the premises. Stocksigns' can create any Dementia friendly signage for your care home; from wall and door graphics to garden and wayfinding signs.



Dementia signage should use high contrasting colours, use words, images and be placed in clearly visible locations.

## Door Signs



## Garden Signs



## Wayfinding



# Index

## New Build

- Site Safety Packs: **Page 2-3**
- Hoarding Panels & Temporary Correx: **Page 4**

## Marketing

- Banners, Ladder Signage, Pavement & V-Boards: **Page 6**

## External Signage

- Fascia & Main Outdoor Signage: **Page 8**
- Car Park, Legislation, CCTV & Smoking: **Page 9**

## Interior Design

- Window Vinyls, Corporate Branding, Walls & Doors: **Page 11**

## Internal Communication

- Internal Communication: **Page 13**

## Wayfinding

- Internal: **Page 15**
- External: **Page 16**

## Door Signage

- Bathroom & Living Facilities: **Page 18**
- Door Numbers, Nameplates & Sliders: **Page 19**

## Health & Safety

- Fire Safety & Hazard Signage: **Page 21**
- Dementia Signage: **Page 22**